



Fugue n°3

Guy BERGERON






Quatuor de Guitares



Fugue n°3

Guy BERGERON

Instruments :

-  Guitare Octave
-  Guitares Quintero
-  Guitare Tierce (3/4)
-  Guitares (x2)
-  Guitare Basse

Liens : PDF - GP - MP3 - MP4

<https://tinyurl.com/Fugue-n-3-Bergeron-Guy>

Quatuor de Guitares



fugue #3

4 guitares

Guy Bergeron

gtr 1

gtr 2

gtr 3

gtr 4

5

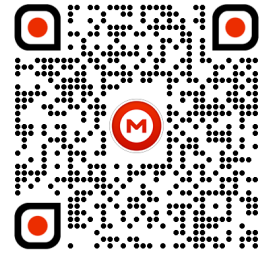
9

25

The image shows a musical score for four staves, measures 25 through 28. The music is in 3/8 time and the key signature has two flats (B-flat and E-flat). The notation includes treble clefs, a key signature of two flats, and a common time signature 'C' at the beginning of measure 25. The first staff contains a melodic line with a slur over measures 25 and 26, and a whole note in measure 28. The second staff has a melodic line with a slur over measures 25 and 26, and a whole note in measure 28. The third staff has a melodic line with a slur over measures 25 and 26, and a whole note in measure 28. The fourth staff has a bass line with a whole note in measure 25, a whole note in measure 26, and a melodic phrase in measures 27 and 28.

Fugue n°3

SCORE



Guy Bergeron

Moderate ♩ = 100

1

G1

G2

G3

G4

Basse (G4)

6

11

16

G1

G2

G3

G4

Basse

②

20

③

24

②

Fugue n°3

(Pour 4 Guitares en doublure)

Guy Bergeron

GO (G1)
Standard tuning
① = E ④ = D
② = B ⑤ = A
③ = G ⑥ = E

GQ (G1)
① = B ④ = A
② = F# ⑤ = E
③ = D ⑥ = B

GT 3/4 (G2)
① = G ④ = F
② = D ⑤ = C
③ = A# ⑥ = G

STD (G3)
Standard tuning
① = E ④ = D
② = B ⑤ = A
③ = G ⑥ = E

STD/B (G4)
Standard tuning
① = E ④ = D
② = B ⑤ = A
③ = G ⑥ = E

Basse (G4)
Standard tuning
① = G ③ = A
② = D ④ = E

Moderate ♩ = 100

1 Capo. fret 3

Capo. fret 1

Capo. fret 3

6

POS II

POS IV

11

GO

GQ

GT

G3

G4

Basse

POS V

POS I

POS II

POS I

15

19

POS V

POS I

23

GO

GQ

GT

G3

G4

Basse

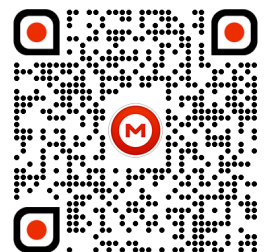
POS V

② ②-----' ② ②--'

⑤ ④ ③

② ③

27



Fugue n°3

(Pour 4 Guitares en doublure)

Guy Bergeron

Standard tuning
① = E ④ = D
② = B ⑤ = A
③ = G ⑥ = E

Moderate ♩ = 100

GO (G1) 1 Capo. fret 3 **15**

16

19

22

25



Fugue n°3

(Pour 4 Guitares en doublure)

Guy Bergeron

① = B	④ = A
② = F#	⑤ = E
③ = D	⑥ = B

Moderate ♩ = 100

GQ (G1) 1 Capo. fret 1 **15**

16 3 2

19 3 4 3 1 4 1 3

22 4 3 1 4 3 4 3 4

25 3 1 1 0 2 3



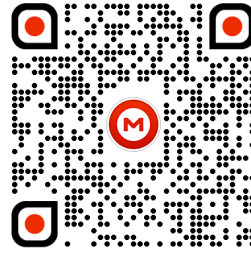
Fugue n°3

(Pour 4 Guitares en doublure)

Guy Bergeron

- | | |
|--------|-------|
| ① = B | ④ = A |
| ② = F# | ⑤ = E |
| ③ = D | ⑥ = B |

Moderate ♩ = 100



15

1 Capo. fret 1

GQ (G1)

16

TAB

19

TAB

22

TAB

25

TAB

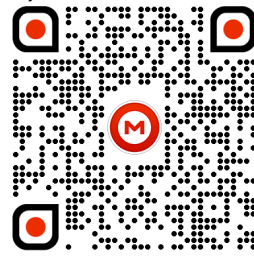
Fugue n°3

(Pour 4 Guitares en doublure)

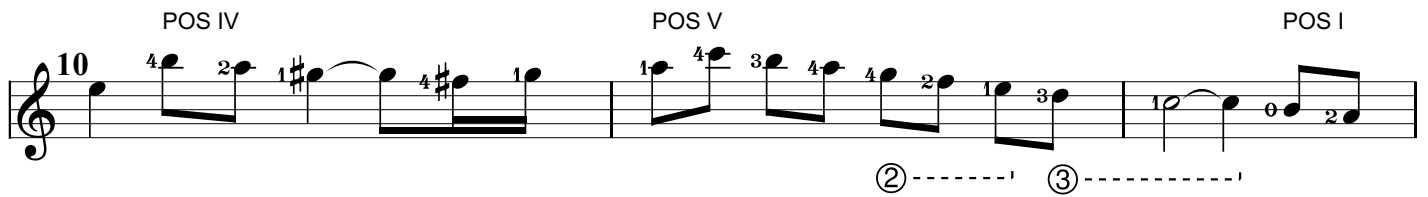
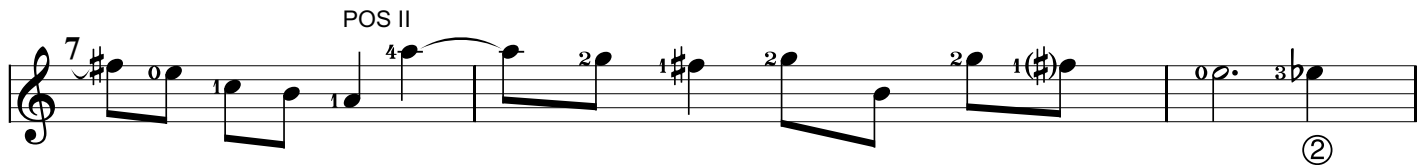
Guy Bergeron

① = G	④ = F
② = D	⑤ = C
③ = A#	⑥ = G

Moderate ♩ = 100



GT 3/4 (G2)



Fugue n°3


(Pour 4 Guitares en doublure)

Guy Bergeron

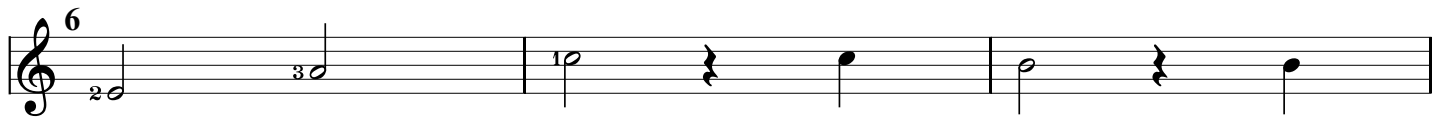
Standard tuning
① = E ④ = D
② = B ⑤ = A
③ = G ⑥ = E

Moderate ♩ = 100

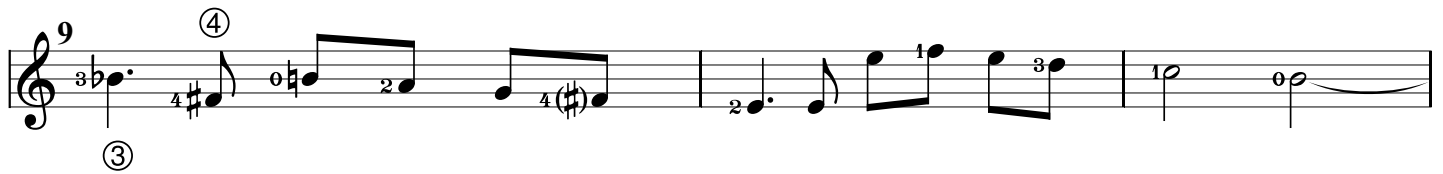
STD (G3) 1 Capo. fret 3 5



6



9



12



15



18



21



24



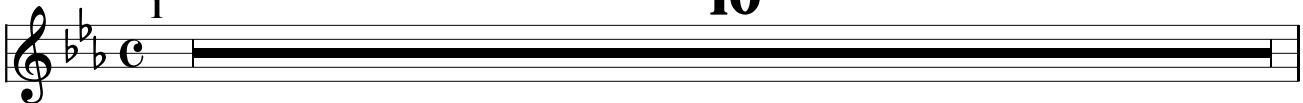
Fugue n°3

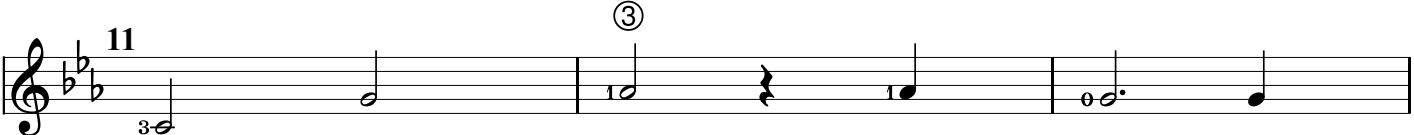
(Pour 4 Guitares en doublure)

Guy Bergeron

Standard tuning
① = E ④ = D
② = B ⑤ = A
③ = G ⑥ = E

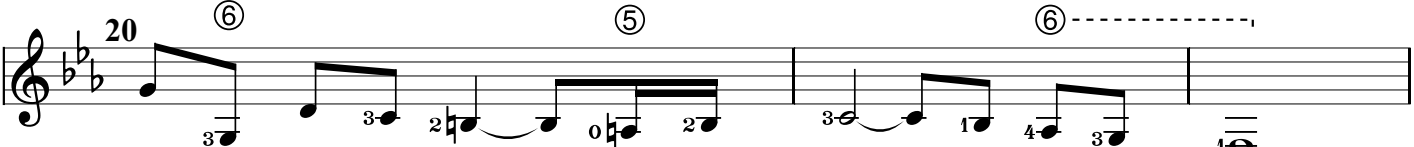
Moderate ♩ = 100

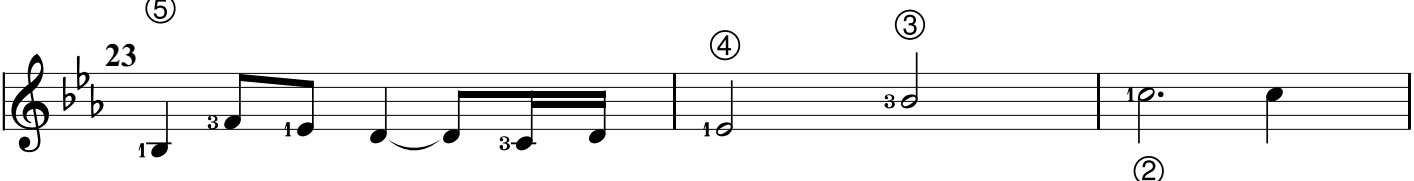
STD/B (G4) 

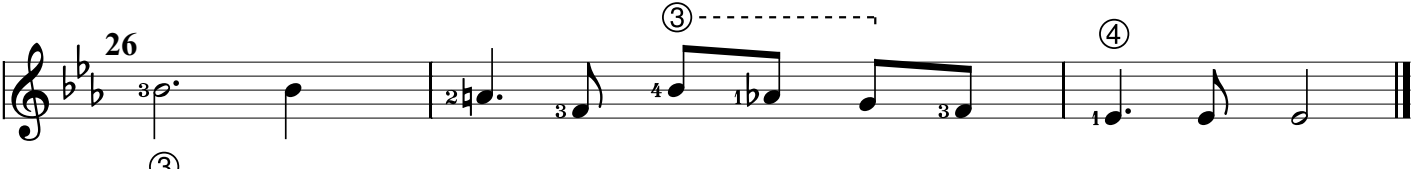














Fugue n°3

(Pour 4 Guitares en doublure)

Guy Bergeron

Standard tuning
① = G ③ = A
② = D ④ = E

Moderate ♩ = 100

Basse 4C (G4)

1 10

② 14 ①

17 ② ①

20 ③ ④

23

26



Fugue n°3

(Pour 4 Guitares en doublure)

Guy Bergeron

Standard tuning
① = G ③ = A
② = D ④ = E

Moderate ♩ = 100

Basse (G4)

1 10

14

17

20

23

26

